



Arlington

Public ART

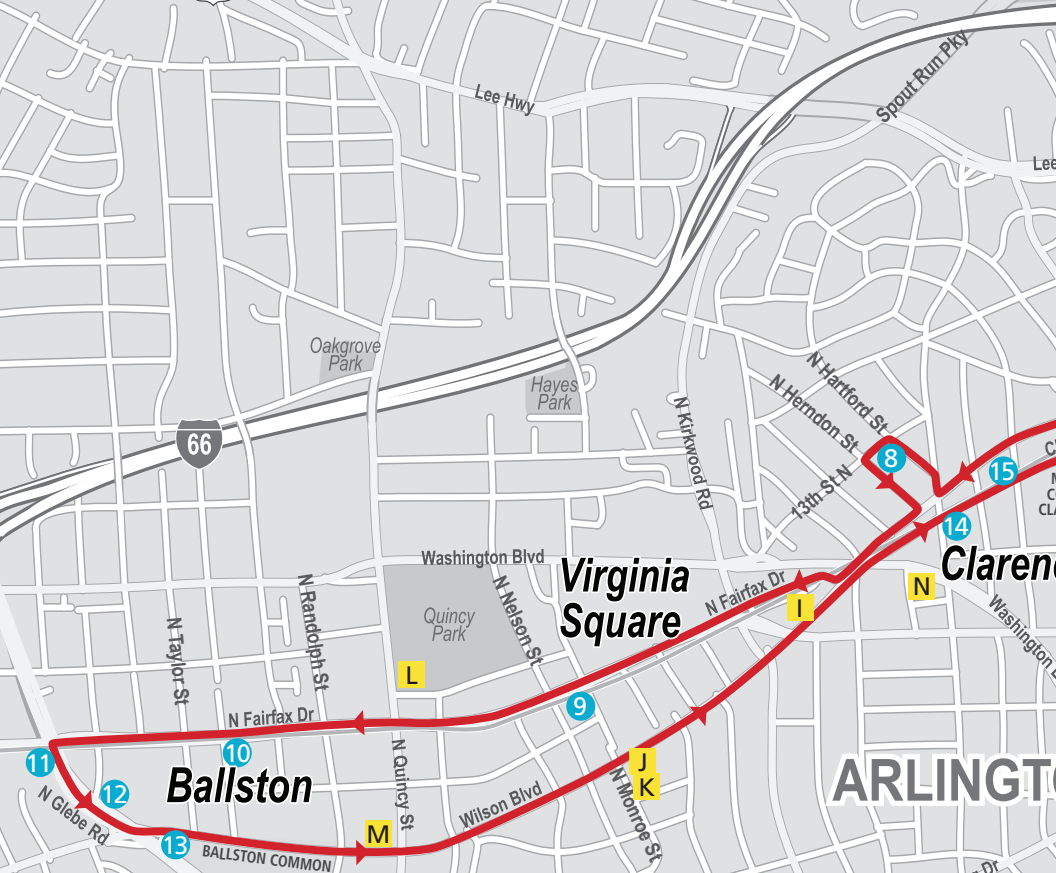
COLLECTION
TOUR #1

Rosslyn-Ballston Corridor

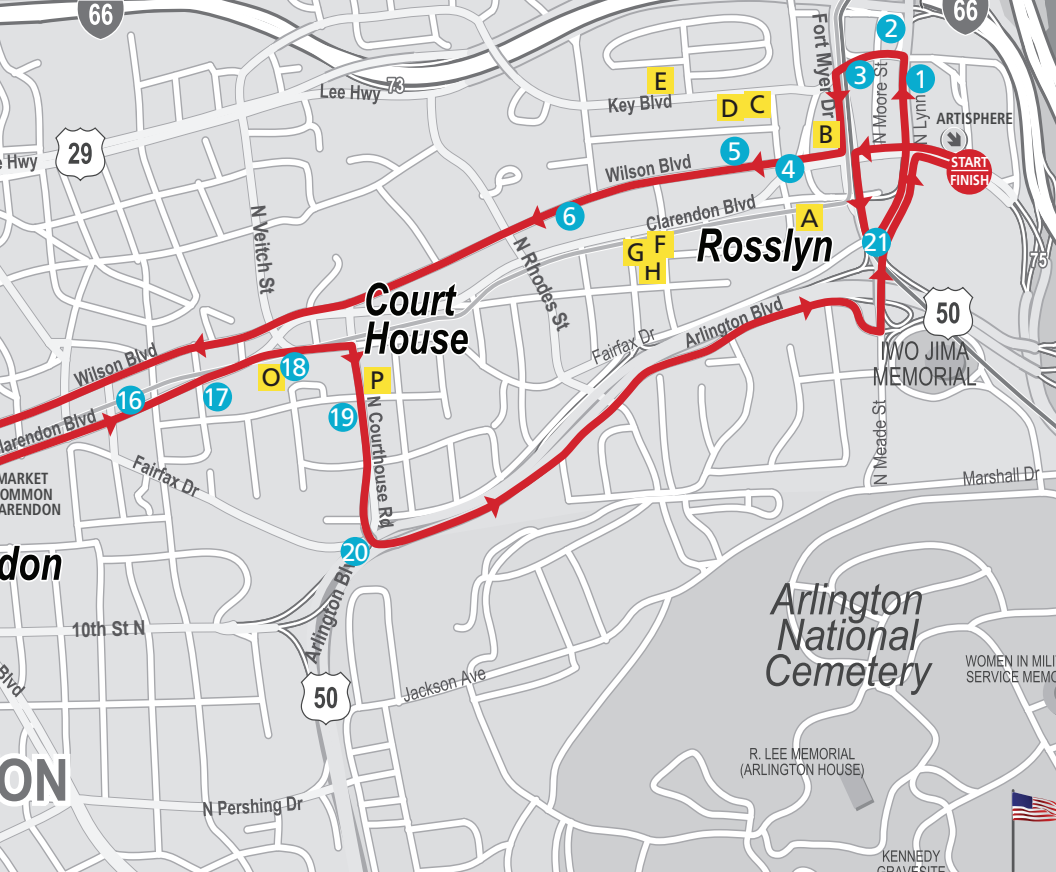


Since 1979, when art was first negotiated as part of a private development project, Arlington has been an innovator in the field of public art. That first artwork – Nancy Holt’s internationally acclaimed *Dark Star Park* – was dedicated in 1984. Now, thirty years later, Arlington is home to a diverse and rich collection of more than sixty permanent public artworks. The commissioning of these works has been guided by a Public Art Policy and Public Art Master Plan, which call for an integrated approach to public art in the places where the County invests its resources.

This vision has resulted in a collection that demonstrates how public art can be a force for placemaking, creating strong, meaningful connections between people and places that are vital to community and civic life. Whether you are visiting us for the first time or are a lifelong Arlingtonian, we hope you enjoy this tour of Arlington’s public art. For more information about any of the artworks or artists, see www.publicart.arlingtonva.us.



- 1 *Liquid Pixels*
Ned Kahn
1801 N. Lynn St.
- 2 *Corridor of Light*
Cliff Garten ‡
N. Lynn St., Lee Hwy
(Gateway Park) to Arlington
Blvd. (Meade Street Bridge),
U.S. 29, includes Central Place
at Rosslyn Metro
- 3 *Quill*
Christian Moeller
N. Fort Myer Dr.,
19th St. & N. Moore St.
- 4 *Cupid's Garden*
Chris Gardner
Wilson Blvd. & Clarendon Blvd.
- 5 *Anna and David*
Miriam Schapiro
1525 Wilson Blvd.
- 6 *Helix*
John Dreyfuss
1800 Wilson Blvd.
- 7 *Dressed Up and Pinned*
Vivian Beer
1525 Wilson Blvd.
- 8 *James Hunter Park*
Thoughtbarn
1230 N. Hartford St.
- 9 *Untitled (VA Square Metro Plaza)*
Y. David Chung and Tom Ashcraft
901 North Nelson St.
- 10 *Plusplus ‡*
Blendid
4230 N. Fairfax Dr. /
Ballston Metro Canopy
- 11 *Flame*
Ray King
950 N. Glebe Rd.
- 12 *Arlington Gateway*
Jackie Ferrara and
M. Paul Friedberg
901 N. Glebe Rd.
- 13 *Bud/Blossom*
Wendy Ross
4300 Wilson Blvd.
- 14 *Naga*
Lisa Scheer
3030 Clarendon Blvd.
- 15 *As on a Darkling Plain*
Wendy M. Ross
2900 Clarendon Blvd.
- 16 *Invisible Forces*
Jim Sanborn
2500 Wilson Blvd.
- 17 *Courthouse River Plaza*
Jesús Bautista Moroles
1401 N. Adams St.
- 18 *Untitled (Etched Glass)*
Linn Meyers
2100 Clarendon Blvd.
- 19 *Courthouse 2.0: Reimagining
the Civic (temporary public
art activations)*
2100 Clarendon Blvd.
- 20 *Untitled (Verizon Plaza)*
Kendall Buster
1320 N. Courthouse Rd.



- 21** *Arlington Boulevard*
Vicki Scuri
Arlington Blvd. from
N. Courthouse Rd. to 10th St.
- 22** *Dark Star Park*
Nancy Holt
1655 Fort Myer Dr.

More public art in Rosslyn:

- A** *The Family: David, Haggit, and Adoniyya*
Boaz Vaadia
1300 17th St.
- B** *Rosslyn*
Y. David Chung
Rosslyn Metro Station,
Ft. Myer Dr. & Wilson Blvd.
- C** *Continuum*
Tom Ashcraft and Y. David Chung
1800 N. Oak St.
- D** *Reposito*
Tom Ashcraft and Y. David Chung
1800 N. Oak St.

- E** *Cosmos, Aerialscape 2*
Heidi Lippman
1537-1545 Key Blvd.
- F** *Radiolaria*
Wendy M. Ross
1600 Clarendon Blvd.
- G** *Untitled*
Kendall Buster
1600 Clarendon Blvd.
- H** *Aya*
Foon Sham
1600 Clarendon Blvd.

More public art in Clarendon, Virginia Square & Ballston:

- I** *ballston* substation*
Ben Fehrman
3241 Wilson Blvd.
- J** *Untitled (Stained Glass Windows)*
Louis Comfort Tiffany
Arlington Arts Center,
3550 Wilson Blvd.

- K** *Spielschiff (Play Ship)*
Bonifatius Stirnberg
Arlington Arts Center,
3550 Wilson Blvd.
- L** *Eternal Truths*
Lisa Fedon
Central Library, 1015 N. Quincy St.
- M** *Transparent Tapestry*
Tim Tate
4005 Wilson Blvd.

More public art in Clarendon & Courthouse:

- N** *Agricultural and Industrial Scenes*
Auriel Bessemer
3118 Washington Blvd.
- O** *Transmission*
Richard Chartier and
Laura Traverso
2100 Clarendon Blvd., 4th Floor
- P** *Aspects of Arlington*
Joachin Araya
1425 N. Courthouse Rd.

1



ROSSLYN

1801 N. Lynn Street

Ned Kahn

Liquid Pixels (2002) consists of six 42 x 25 foot vertical sections mounted on the north and west sides of this office building’s parking garage. The six panels are covered with a total of 630,000 one inch diameter disks affixed to 12 x 12 inch square tiles with low-friction pins. The disks move

freely on their pins in response to the wind, thus revealing otherwise invisible natural patterns of movement. As light passes over the disks, their shimmering mimics water cascading down the building façade to a mesmerizing effect.

2



ROSSLYN

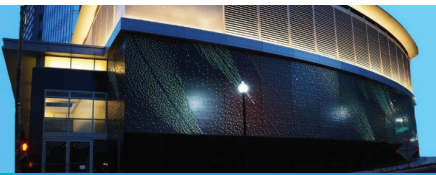
N. Lynn Street, Lee Highway (Gateway Park) to Arlington Boulevard (Meade Street Bridge)

Cliff Garten

Corridor of Light (concept, phase one/JBG Central Place-expected 2017; phase two/Gateway Park-expected 2019) is a synthesis of public sculpture, light and infrastructure, embracing and defining Rosslyn’s emerging urbanity. Illuminated sculptures of different scales are proposed to appear at significant junctures along the N. Lynn Street corridor. As a series, they will create a sense of place for the core of Rosslyn and mark two significant gateways into the County. In daylight, the

stainless steel surfaces of the gateway forms will play with reflection and refraction of natural light. By night, the inner and outer volumes will be illuminated with LED lights, refracted by the surface of the stainless steel rods to produce a dazzling spectrum of color. The Meade Street Bridge phase is projected to resume planning in FY 20 as per the County Manager’s Proposed Capital Improvement Plan for Fiscal Years 2017-26.

3



ROSSLYN

Intersection of N. Fort Myer Drive, 19th, & N. Moore Streets

Christian Moeller

Quill (2014) consists of 19,500 light-absorptive circular elements attached to an aluminum surface. Light green and

charged by the sun during the daytime, the dots glisten for a viewer in motion at night, enhanced by ambient street and traffic lights.

4



ROSSLYN

Wilson & Clarendon Boulevards

Chris Gardner

Cupid's Garden (1994) is the garden where the artist imagines "Cupid grows his arrows." Arrows have long been a predominant motif in the artist's work. Gardner enjoys the dynamism and sense of movement they convey, as well as the numerous metaphorical possibilities they offer. *Cupid's Garden* is appropriately located on a traffic island where several streets converge. The frenetic accumulation of arrows in this piece alludes to the busy flow of traffic surrounding the sculpture, forming a distinctive landmark which provides legibility and defines a sense of place.

5



ROSSLYN

1525 Wilson Boulevard

Miriam Schapiro

Anna and David (1987) is a three-story, brightly painted sculpture, which conveys movement through animated poses and brightly painted aluminum. A woman steps sideways, raising her arms while her partner appears to dance in a similarly dynamic stance. Schapiro writes, "I wish to translate feeling into movement in my figurative works, so that body language tells the story." This sense of movement is visible in *Anna and David* and allows the sculpture to enliven the surrounding neighborhood.

6



ROSSLYN

1800 Wilson Boulevard

John Dreyfuss

Helix (2006) is a massive bronze pelvis resulting from the artist's interest in investigating small components that unite to form a large complex structure. For this piece the artist looked to the human skeleton and used digital technology to refine the shape of the sculpture prior to execution.

7



COURTHOUSE

2401 Wilson Boulevard

Vivian Beer

Dressed Up and Pinned (2016) is based on the forms of fashion and the materials of automotive design. This functional sculpture designed as a bench takes the shape of a surreal stiletto high heel which morphs into

drapery wrapping around the façade of the building.

8



CLARENDON

1230 N. Hartford Street

Thoughtbarn

James Hunter Park (2013) is a playful wayfinding system designed by public artists Robert Gay and Lucy Begg for this canine community area. These colorful signs provide identity for the park as well as information about the facility's unique environmental features, encouraging learning throughout the space. Clustered

in various shapes, sizes, and colors, they are reminiscent of wildflowers sprouting up across the park.

9



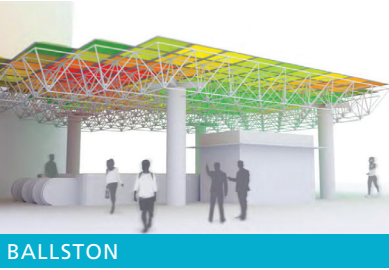
VIRGINIA SQUARE

901 N. Nelson Street

Y. David Chung and Tom Ashcraft

Virginia Square Metro Plaza (2003) was created through the collaborative efforts of artists Tom Ashcraft and Y. David Chung, SmithGroup architects, and Stephenson & Good landscape architects. The team designed a modern piazza to include both functional and aesthetic components consisting of benches, planters, a fountain, a clock tower, and a commemorative compass rose medallion.

10



BALLSTON

4230 N. Fairfax Drive/Metro Canopy

Blendid

Plusplus (concept, expected 2017) will observe the residents, commuters and visitors who activate this vibrant area and turn their activity into a fluid composition of lights and color on the canopy. Each skylight will be covered with film or paint

and illuminated with an individual LED up-light. Custom software will use data from motion sensors, transforming it into evolving light patterns. This project is part of the Ballston Business Improvement District Public Displays of Innovation temporary public art series.

11



BALLSTON

950 N. Glebe Road

Ray King

Flame (2006) is a helical form composed of dichroic glass joined with a steel framework. Dichroic glass exhibits different colors as it reflects or transmits light. Acting as a beacon for those entering or exiting the Ballston neighborhood, *Flame's* appearance is in constant flux as lighting conditions shift. Sunlight strikes the glass to create a shimmering appearance, while internal lighting subtly illuminates the sculpture after dark.

12



BALLSTON

901 N. Glebe Road

Jackie Ferrara and M. Paul Friedberg

Arlington Gateway (2004) is a two-level, 40,000 square foot courtyard. Tucked away from its urban surroundings, the quiet refuge features a fountain, water wall and channel, benches, wisteria-entwined steel canopy,

and interlocking pavers. The artist, Ferrara, collaborated with the landscape architect, Friedberg, to create a distinct environment.

13



BALLSTON

4300 Wilson Boulevard

Wendy Ross

Bud/Blossom (2003) reflects the artist's interest in interpreting patterns of energy and progressions of growth and change borrowed from the natural environment. This piece was inspired by the intrinsic geometry of a floral structure. The geometry is expressed through the symmetrical arrangement of stainless steel rods which impart the work with a strong spatial linear component. Chevron patterns move along the sculpture's

swelling framework and taper toward its pinnacle. The expansion and contraction of the sculpture's form reflects nature's energy as well as that of the busy intersection at which the artwork stands.

14



CLARENDON

3030 Clarendon Boulevard

Lisa Scheer

Naga (2010) is comprised of vertical and horizontal sculptural elements combined to designate the pedestrian pathway between the landscaped plaza and residential building. The vertical element forms a visual exclamation mark, while the dynamic

S-curves of the horizontal piece echo the constant motion of this busy location. In this and similarly sited sculptures, Scheer explores the ways mass and volume define space.

15



CLARENDON

2900 Clarendon Boulevard

Wendy Ross

As on a Darkling Plain (2006) displays stylized trees, which wrap themselves around the corners and columns of this building appearing frozen in a windswept position. The work softens this urban street corner with muted earth colors and forms inspired by Ukiyo-e, a genre of Japanese woodblock prints produced between the 17th and 20th centuries. The title, *As on a Darkling Plain*, originates from Matthew Arnold's famous 19th century

poem, "Dover Beach", which dwells on the crisis in faith in the mid-Victorian era.

16



COURTHOUSE

2500 Wilson Boulevard

Jim Sanborn

Invisible Forces (1987) evokes natural forms and forces as well as elements both visible and invisible. Here, slabs of granite seating and a stele of granite and quartz refer to monumental geologic forms created over millennia. Illustrating nature's dynamic

and opposing forces, the stele features a steel lightning bolt arcing down to the ground on its journey from the sky.

17



COURTHOUSE

1401 N. Adams Street

Jesus Bautista Moroles

Courthouse River Plaza (2009) is inspired by Arlington's location on the geological dividing line between Virginia's Piedmont and Coastal Plain and our proximity to Great Falls. Moroles created a red granite 4' tall rough cylindrical

"mountain" from which water flows into narrow channels that represent the waterways of the Coastal Plain. Three gnarly granite pillars, also with water flowing along their surfaces, represent the trees of the Piedmont.

18



COURTHOUSE

2100 Clarendon Boulevard

Linn Meyers

These ***Untitled*** etched glass treatments (2012) use the County government conference rooms' glass enclosures as a "canvas," creating privacy for meetings held within. Each line in the design forms the record of a physical movement – the inevitable inconsistencies and

imperfections of the hand as it draws line atop line – just as the human bodies moving through time and space interact with the design, becoming integral to the final composition.

19



COURTHOUSE

2100 Clarendon Boulevard

Courthouse 2.0: Reimagining the Civic

is a public art initiative aimed at sparking PUBLIC CONVERSATION about the future Courthouse Square by exploring the interaction between CIVIC SPACE and CIVIC LIFE in Arlington in the twenty-first century. Courthouse is THE SYMBOLIC HEART OF ARLINGTON,

a public “town square” where all can gather to CREATE, CELEBRATE, OR TO SIMPLY RELAX. This is an opportunity to ENAGE PEOPLE IN NEW and CREATIVE WAYS.

20



COURTHOUSE

1320 N. Courthouse Road

Kendall Buster

The grouping of balloon-like chambers in ***Untitled*** (2000) allows visitors to enter the sculpture and experience feelings of both confinement and security. The multiple and replicating shapes spring from the artist’s interest in microbiology, which she once studied. The architectural-like forms echo the oval shape of the plaza in which they are situated and for which they were expressly designed. The artwork heightens an awareness of the ways in which we reveal and conceal ourselves as we inhabit public spaces.

Arlington Boulevard from N. Courthouse Road to 10th Street

21



COURTHOUSE

Vicki Scuri

Arlington Boulevard (2014) is an infrastructure enhancement project inspired by native Red Bud trees found growing near the site. Carved heart-shaped leaf patterns and seedpods as well as nighttime accent lighting add texture, drama and a tempering to otherwise stark concrete retaining walls and two overpass bridges. This project was

commissioned in partnership with VDOT, representing the most ambitious art project sponsored by the statewide agency to date.

1655 Fort Myer Drive



Nancy Holt

Dark Star Park (1984, restored 2003) is Arlington's first contemporary work of public art, its completion marking the beginning of the County's Public Art program. Each year on August 1st, at 9:32 AM, shadows cast by the poles and spheres align with permanent forms in the shape of the shadows on the ground. The date marks the day in 1860 that William Henry Ross purchased the land that later became Rosslyn.

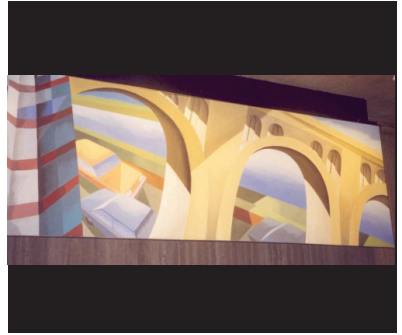
More Public Art in the Rosslyn–Ballston Corridor

A



The Family: David, Haggit, and Adoniyya
Boaz Vaadia

B



Rosslyn
Y. David Chung

C



Continuum
Tom Ashcraft and Y. David Chung

D



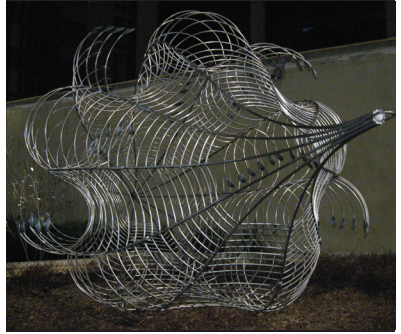
Reposito
Tom Ashcraft and Y. David Chung

E



Cosmos, Aerialscape 2
Heidi Lippman

F



Radiolaria
Wendy M. Ross

G



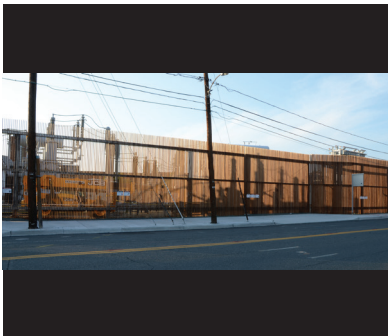
Untitled
Kendall Buster

H



Aya
Foon Sham

I



*ballston * substation*
Ben Fehrmann

J



Untitled
Louis Comfort Tiffany

K



Spielschiff (Play Ship)
Bonifatius Stirnberg

L



Eternal Truths
Lisa Fedon

M



Transparent Tapestry
Tim Tate

N



Agricultural and Industrial Scenes
Auriel Bessemer

O



Transmission
Richard Chartier and Laura Traverso

P



Aspects of Arlington
Joachin Araya

Arlington Public Art

Arlington Economic Development
1100 N. Glebe Rd, Suite 1500 • Arlington, VA 22201

For more information see www.publicart.arlingtonva.us.
Follow us on Facebook at Arts Arlington

arlington  arts

